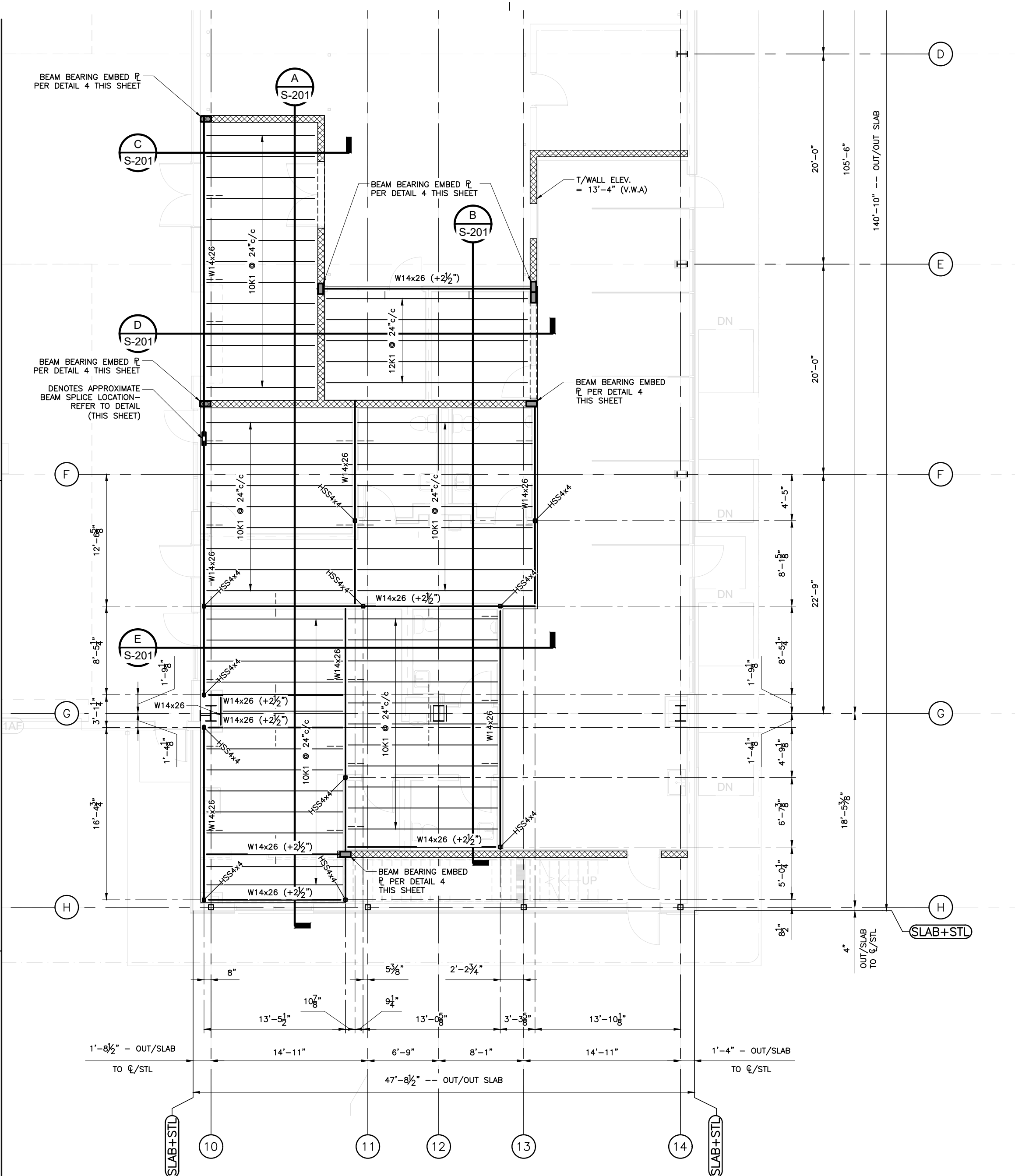
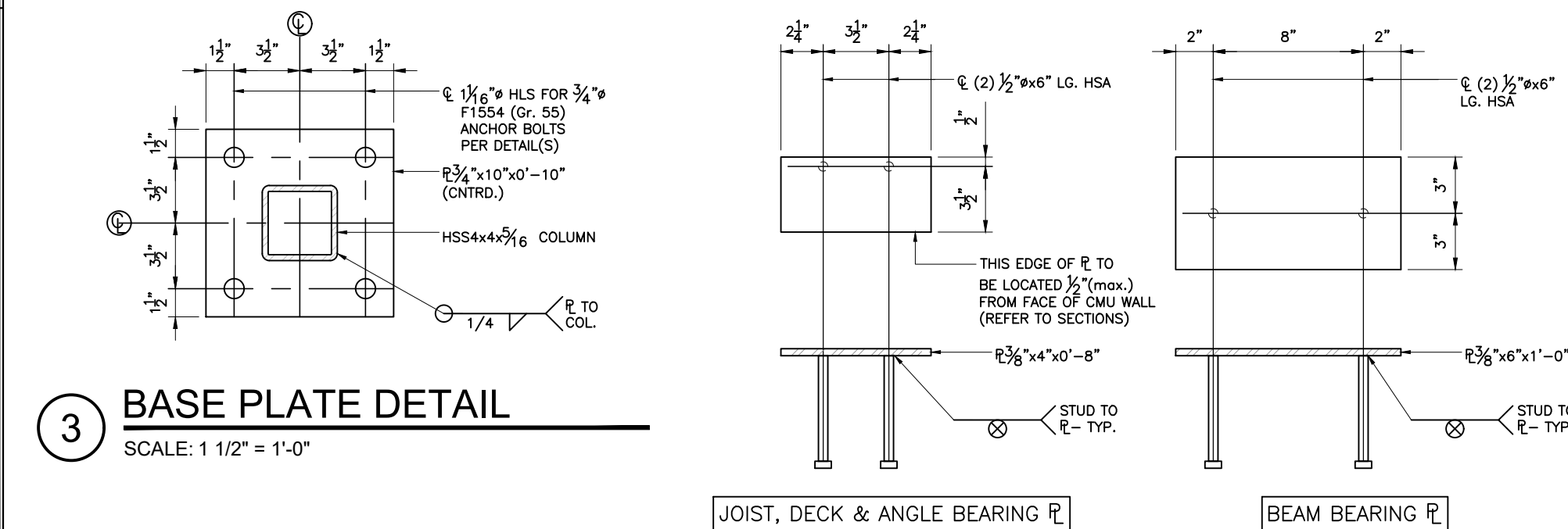


5/21/2026 4:20:42 PM



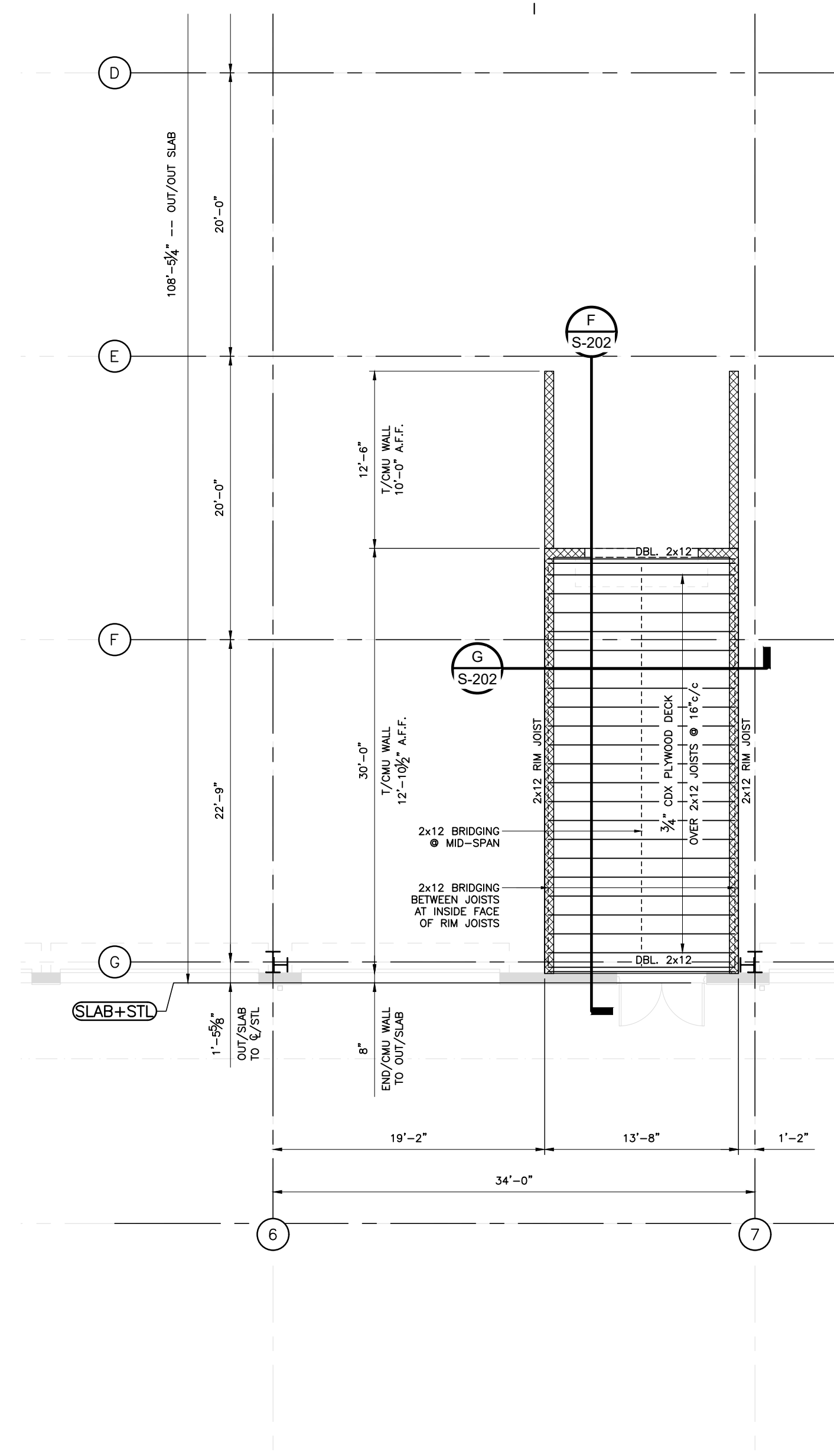
1 SECOND FLOOR FRAMING PLAN AT SERVICE AREA (T/STEEL 13'-6" U.N.O.)
SCALE: 1/8" = 1'-0"



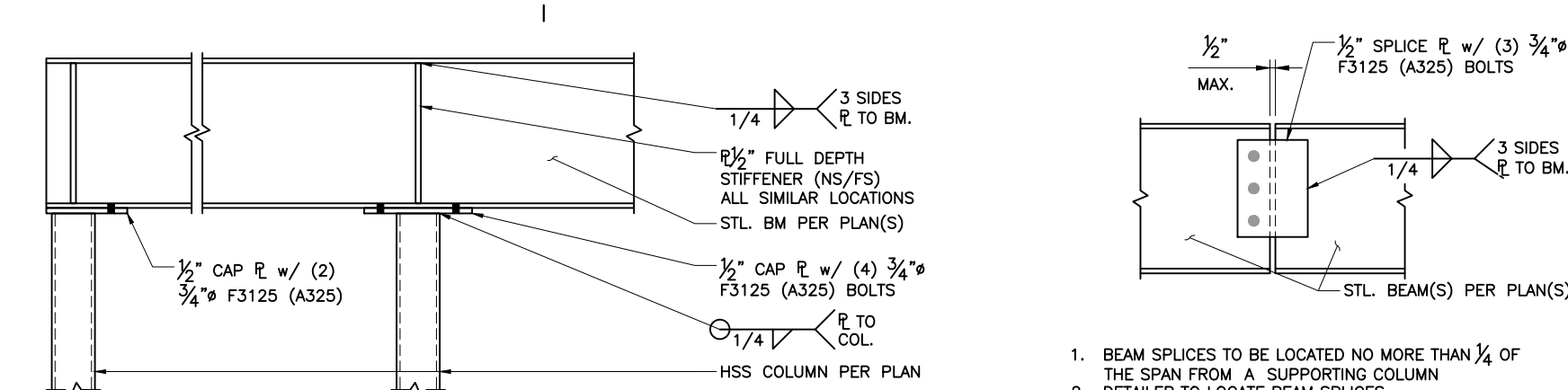
3 BASE PLATE DETAIL
SCALE: 1 1/2" = 1'-0"

JOIST, DECK & ANGLE BEARING R

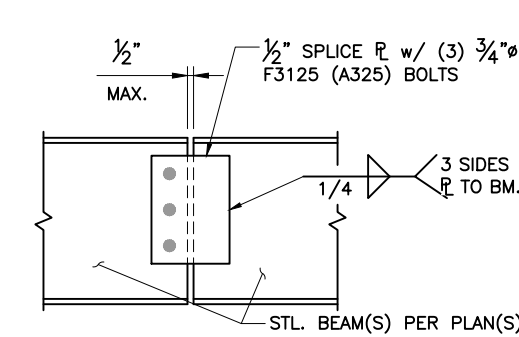
4 BEARING PLATE DETAILS
SCALE: 1 1/2" = 1'-0"



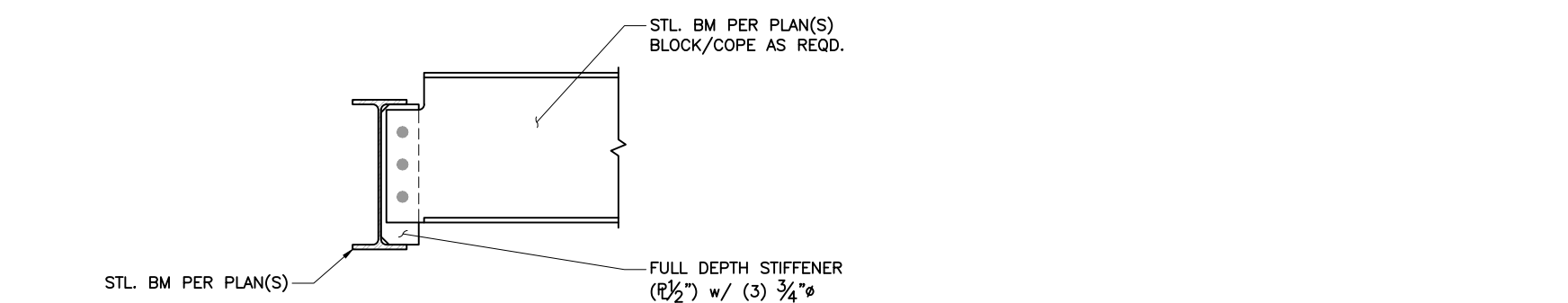
2 SECOND FLOOR FRAMING PLAN OVER OIL AND COMPRESSOR ROOM IN SERVICE BAYS
SCALE: 1/8" = 1'-0"



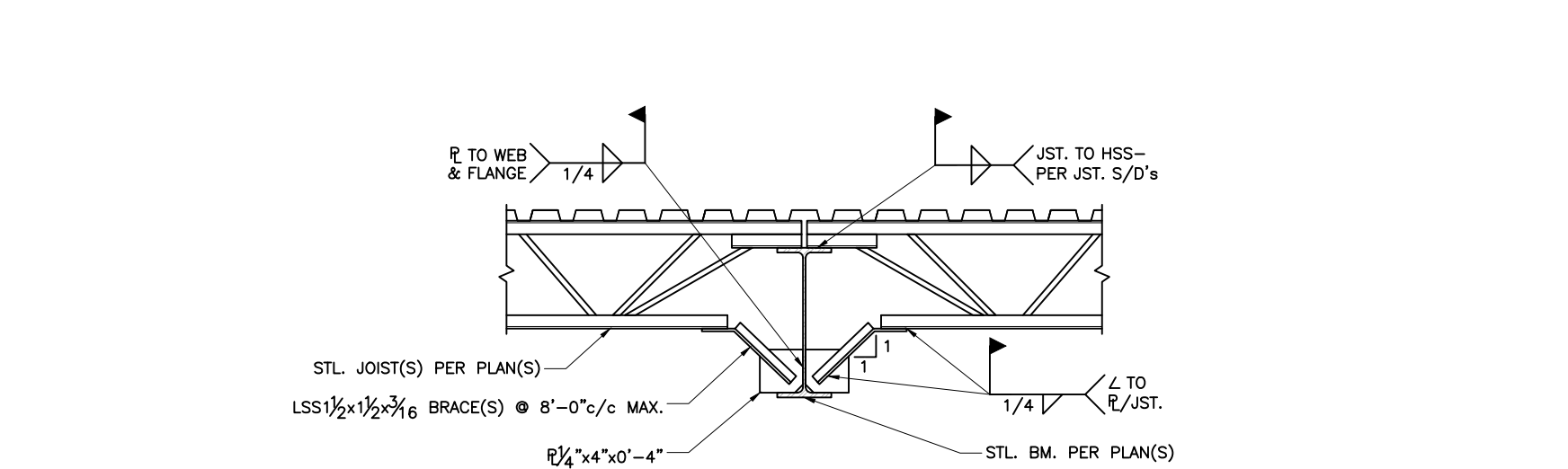
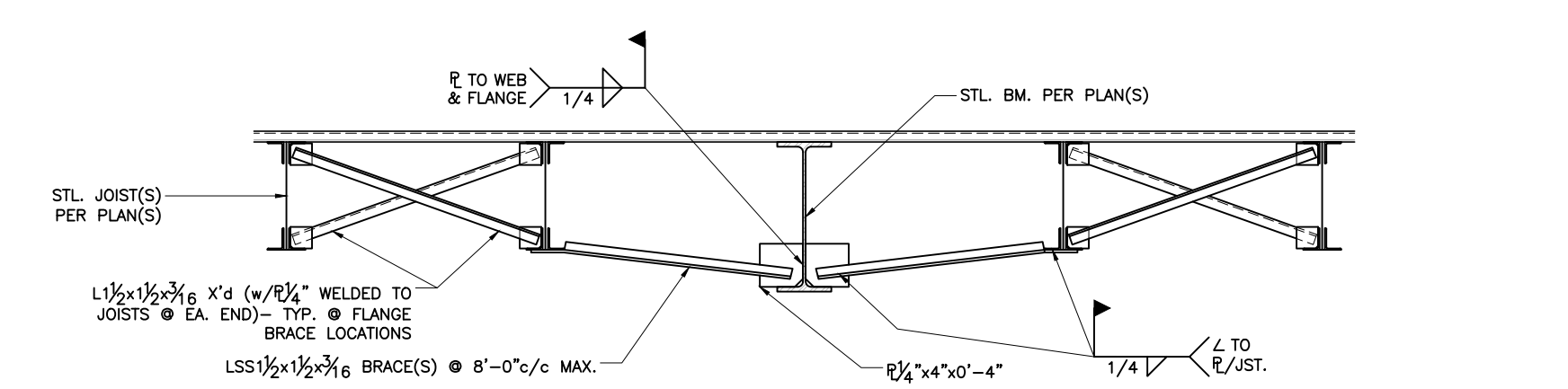
5 BEAM OVER COLUMN CONNECTION DETAILS
SCALE: 3/4" = 1'-0"



6 BEAM SPLICE DETAIL
SCALE: 3/4" = 1'-0"



7 BEAM INTO BEAM CONNECTION DETAIL
SCALE: 3/4" = 1'-0"



8 BEAM BOTTOM FLANGE BRACING DETAILS
SCALE: 3/4" = 1'-0"



RANDY M. GOODLOE, AIA, APAC
725 KIRBY STREET
LAKE CHARLES, LOUISIANA

OFFICE: 337.436.3036
FAX: 337.436.3773



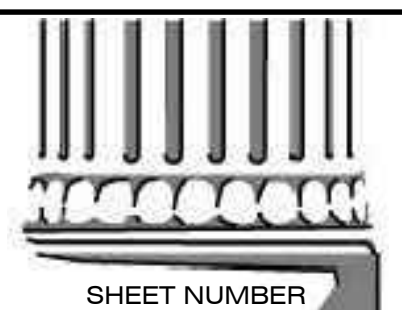
NEW CONSTRUCTION
FORD PRO
FOR
MIKE WILLIS

2010 PATTON STREET, SULPHUR, LA 70665

© COPYRIGHT 2026,
RANDY M. GOODLOE, AIA, APAC
ALL INFORMATION, EITHER DRAWN, WRITTEN,
OR IMPLIED APPEARING IN THIS DOCUMENT
SHALL NOT BE DUPLICATED, DISCLOSED, OR
OTHERWISE USED WITHOUT THE WRITTEN
PERMISSION OF THE AUTHOR, RANDY M.
GOODLOE, AIA, APAC. THIS DOCUMENT IS AN
INSTRUMENT OF SERVICE AND IS THE SOLE
PROPERTY OF THE AUTHOR. FURTHERMORE,
THE USE OF THIS DOCUMENT FOR ANY
PURPOSE SHALL BE REVOKED, IF THE INTENT
OF THE DESIGN OR THE CONSTRUCTION
TECHNIQUES OR DETAILS SHOWN HEREIN
ARE NOT ADHERED TO OR THE
CONTRACTUAL AGREEMENT GOVERNING
THEIR USE ARE NOT STRICTLY ADHERED TO.

RMG PROJECT NO.
25012
PROJECT MANAGER
TM
DATE ISSUED
05/22/2026

REVISED



S-200
FRAMING PLANS AND
TYPICAL STEEL
DETAILS

